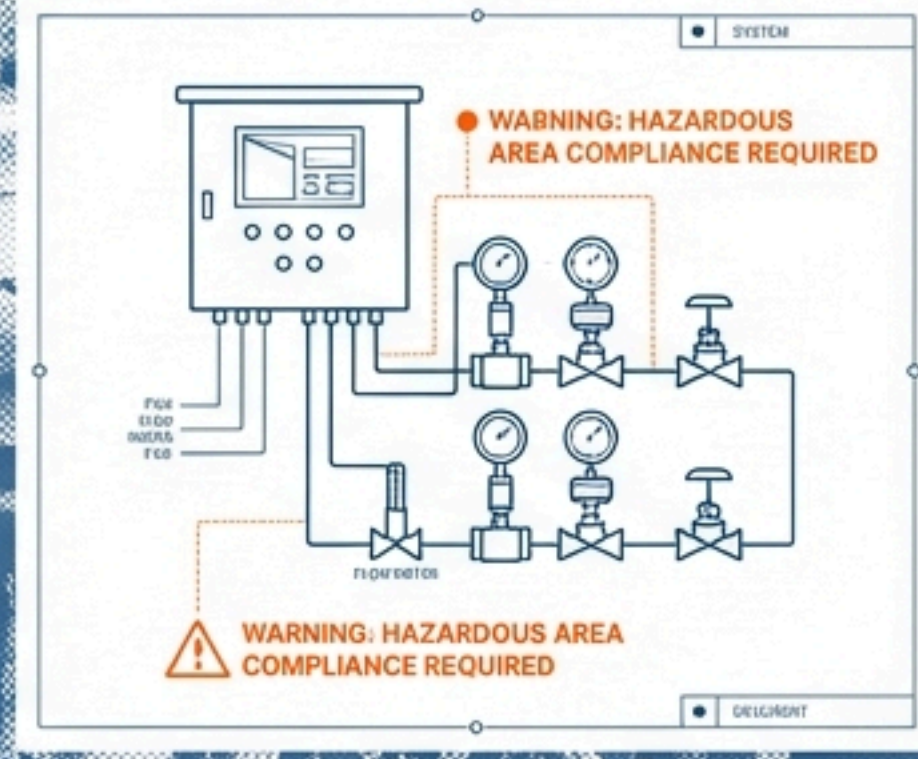


ELECTRICAL WORKS & TERMINAL INSTALLATION

India-Bangladesh Friendship Pipeline Project (IBFPL)

Project Site: NRL- Siliguri Marketing Terminal, Rangapani, Darjeeling



Executed by DG MICROPRONIX PVT. LTD.
30 Years of Engineering Excellence.



CLIENT: BRIDGE & ROOF CO. (INDIA) LTD. /
NUMALIGARH REFINERY LIMITED (NRL)

CONTRACTOR: M/S DG MICROPRONIX PVT. LTD.

SCOPE: INSTALLATION OF ELECTRICAL EQUIPMENT,
MACHINERIES & MISCELLANEOUS WORKS (PART A)



POWER TRANSFORMATION SYSTEMS

ONAN OUTDOOR TRANSFORMER

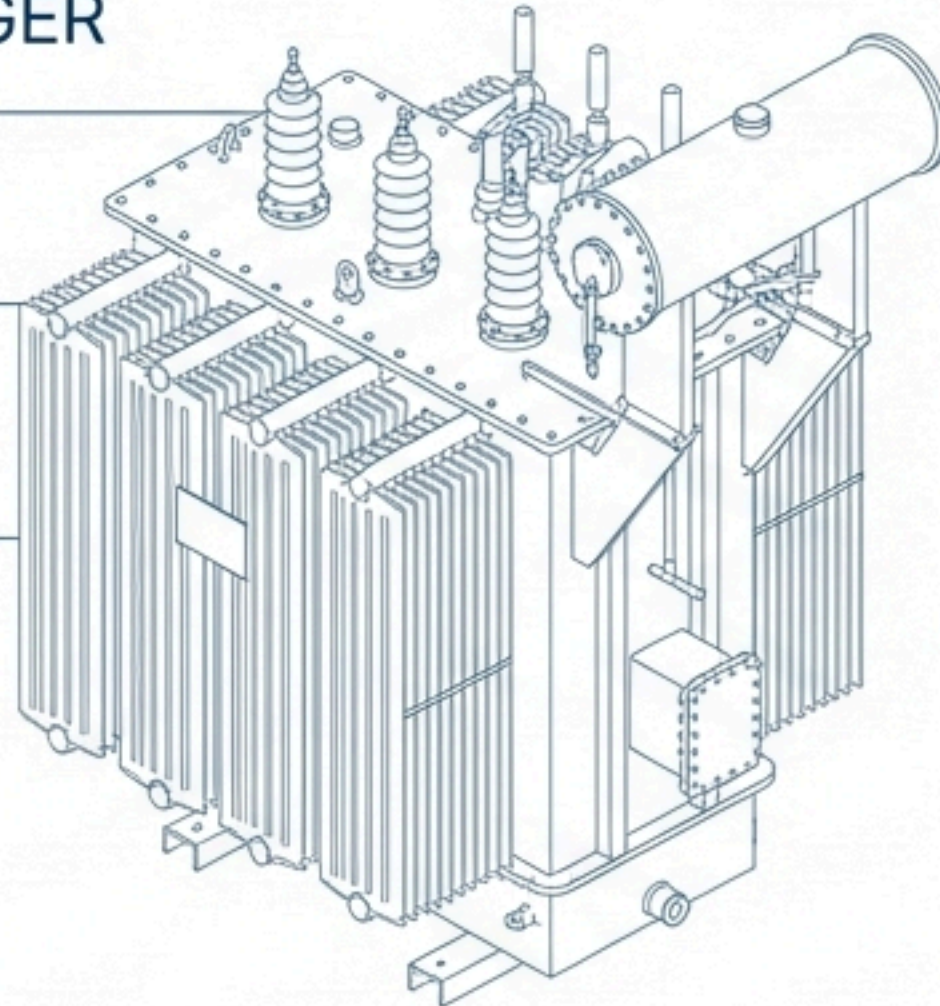
WITH OFF-CIRCUIT TAP CHANGER

SPECS: 11 kV / 433 kV, 1 MVA

QUANTITY: 2 NOS

TASK LIST:

- Foundation
- Assembly
- Oil Topping
- Testing



DRY TYPE TRANSFORMERS

SPECS: 415 kV / 415 kV, 63 kVA

QUANTITY: 2 NOS



DISTRIBUTION & CONTROL INFRASTRUCTURE



SWITCH-BOARDS



RELAY & CONTROL
PANELS



UPS SYSTEMS &
BATTERY CHARGERS



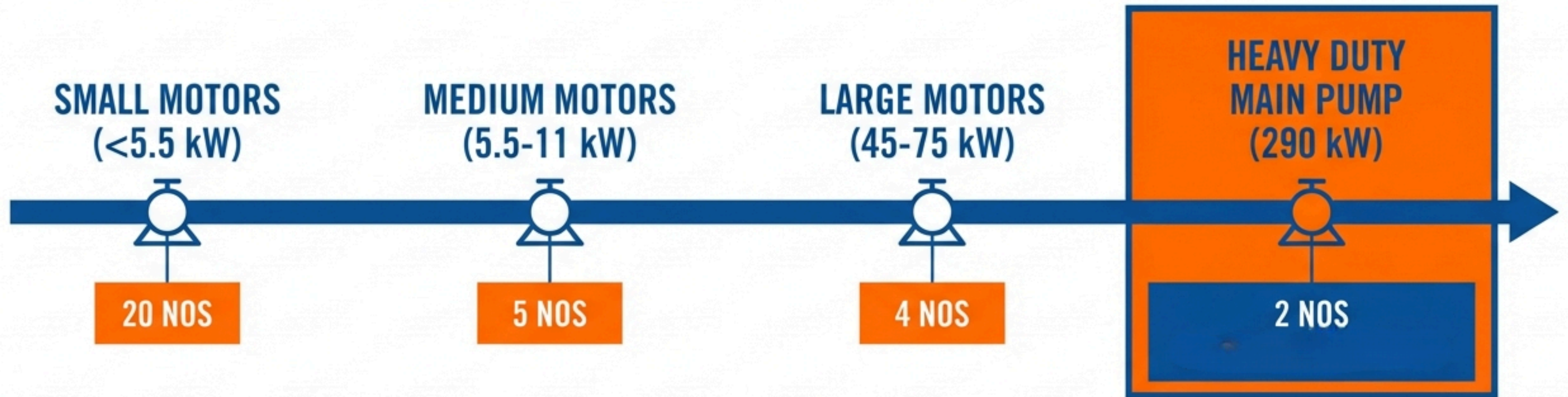
ANNUNCIATION
& VSD PANELS

EXECUTION SCOPE

- Grouting to foundations/walls
- Interconnection of shipping sections
- Wiring between sections
- Calibration of relays and meters



KINETIC SYSTEMS & MOTOR COMMISSIONING

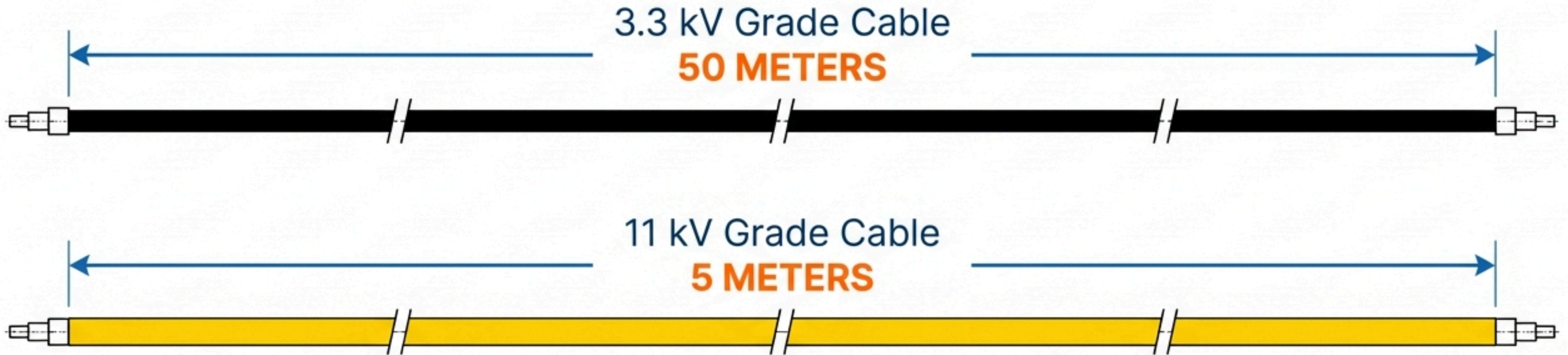


SCOPE OF WORK:

Scope includes termination, grease change, no-load running, and full-load running with coupled interface.



HIGH VOLTAGE DISTRIBUTION NETWORK



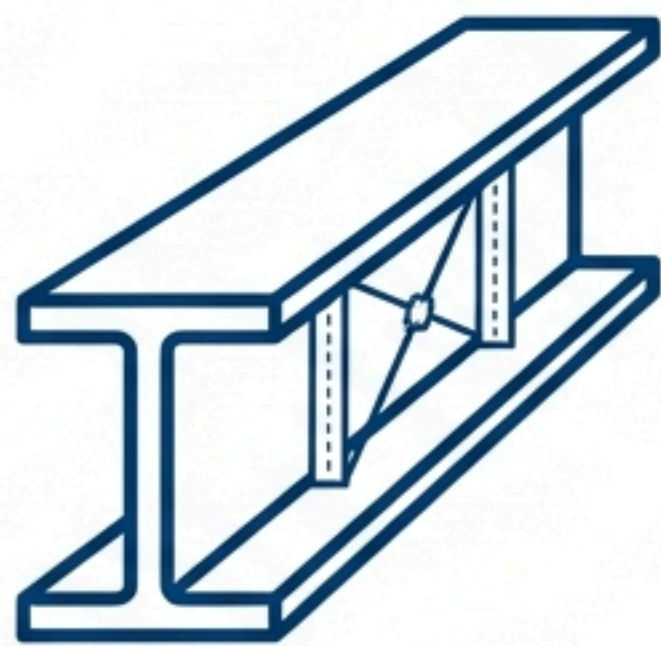
HV CABLE JOINTS: 4 NOS

Spec: **Straight through HSS Chemical joints** (11 kV, 3 Core, 240 sqmm)

Standard: IS-15652



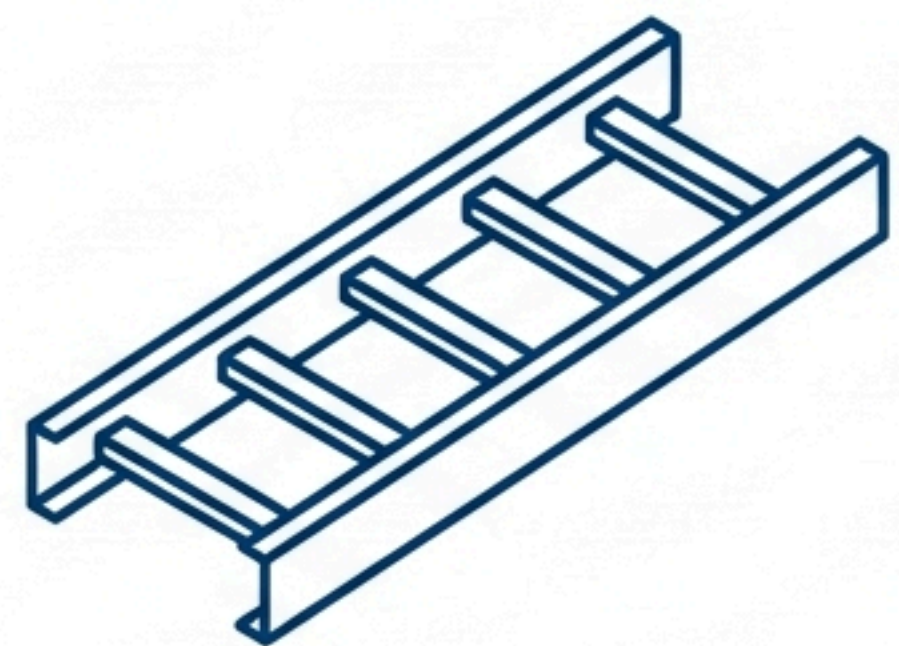
STRUCTURAL SUPPORT & CABLE MANAGEMENT



STRUCTURAL STEEL WORK

2,500 KG

Fabrication of MS base frames & supports.
Treated with anti-rust primer & synthetic enamel (Spec 6-79-0020).



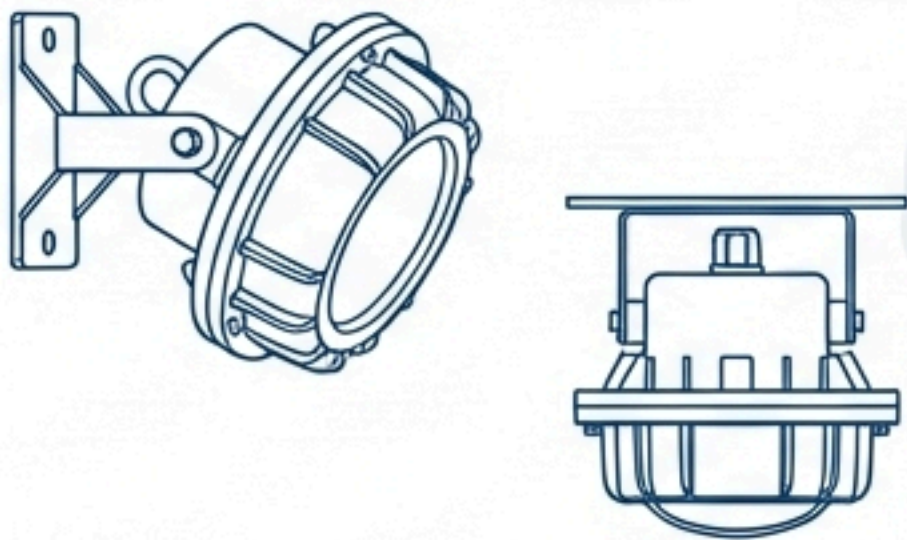
CABLE TRAYS (Hot Dip Galvanized)

300mm Wide: **125 Meters**
600mm Wide: **200 Meters**



HAZARDOUS AREA ILLUMINATION (FLP)

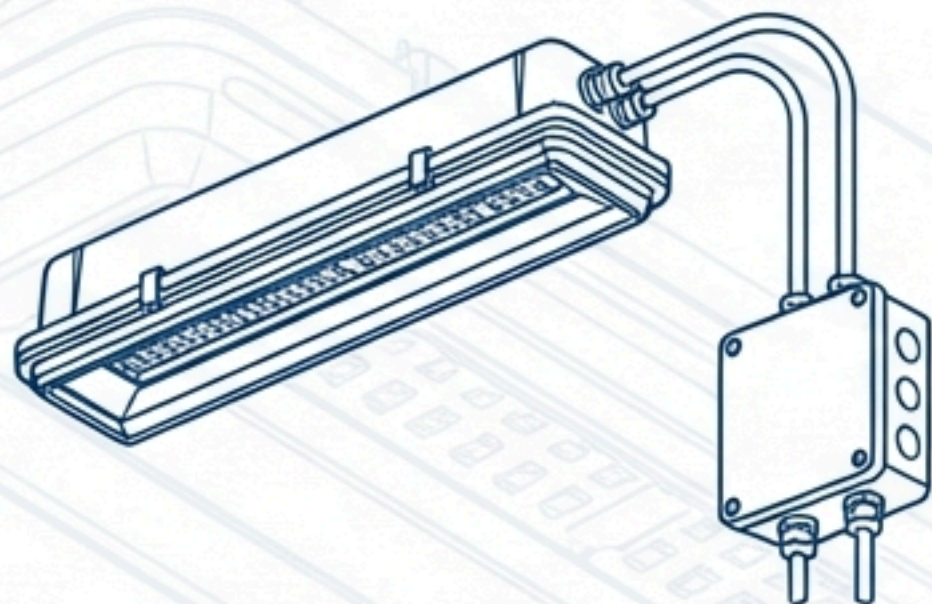
Compliance: EIL Standard Specification No. 6-51-0061



FLP FIXTURES (Type A & B)

Bracket Mounted: **14 NOS**

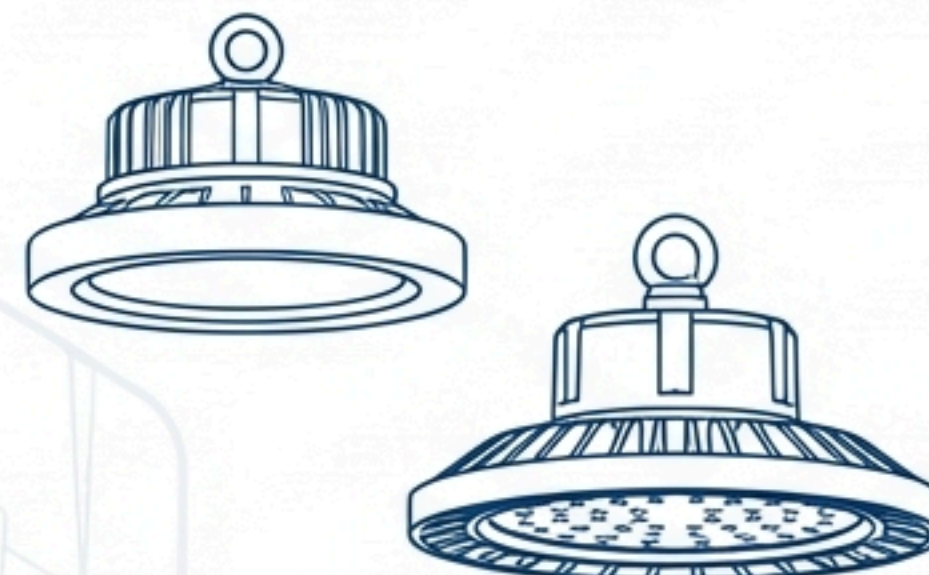
Ceiling Mounted: **33 NOS**



LED FLP-5a

Quantity: **27 NOS**

Note: Includes connection to marshaling box



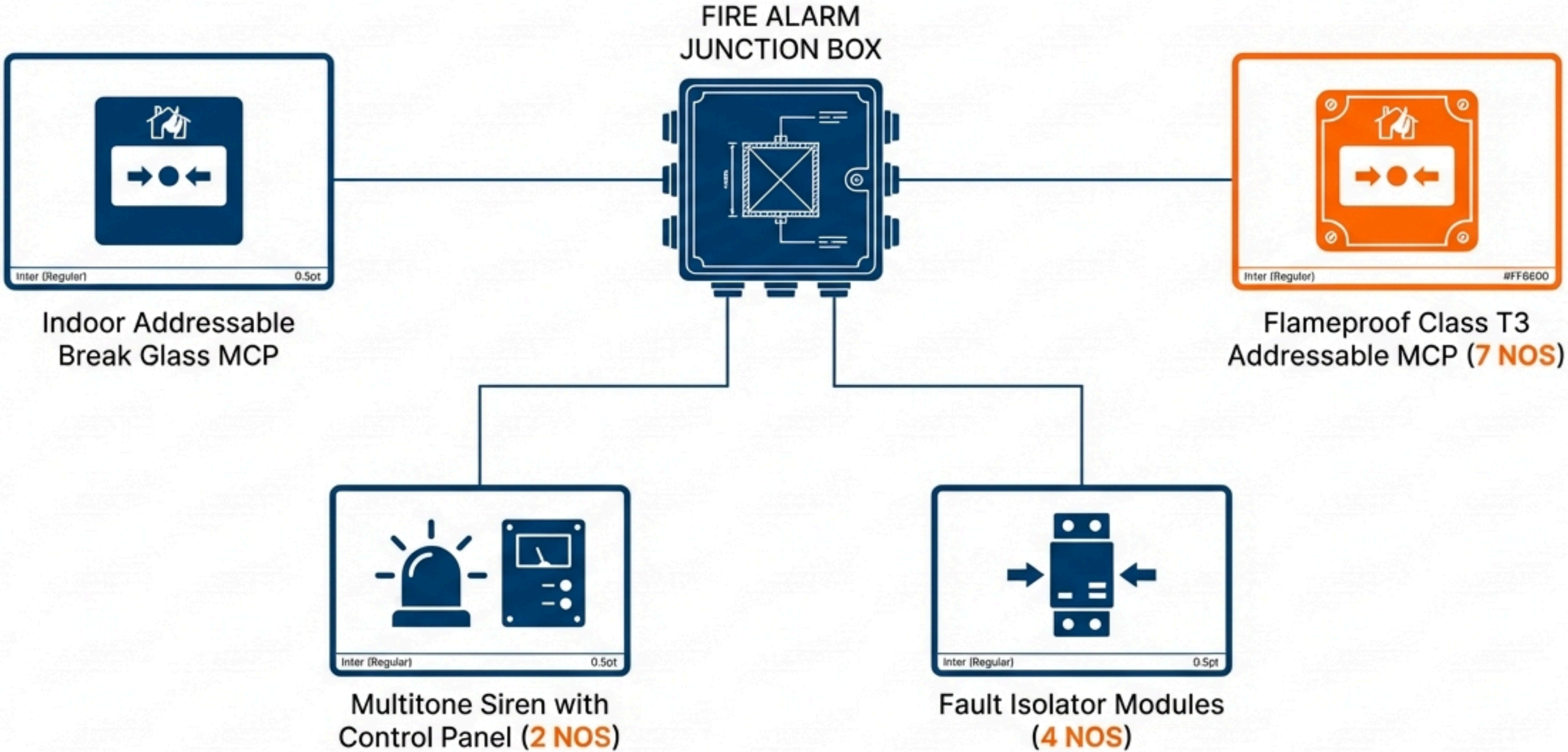
INDUSTRIAL LED

R5D-10 Type: **3 NOS**

SFD-12 Type: **3 NOS**



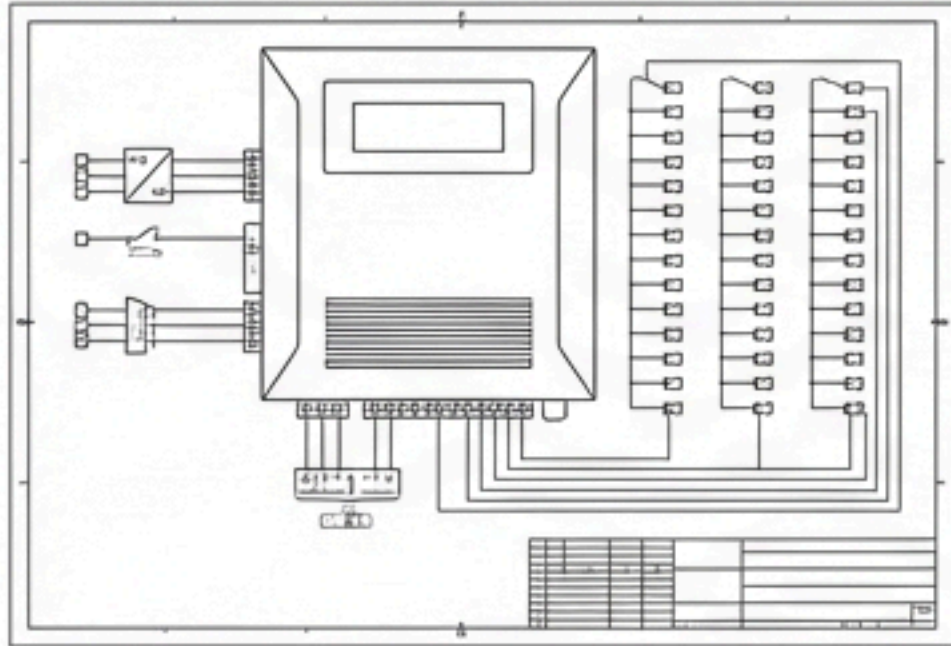
FIRE DETECTION & ALARM ARCHITECTURE





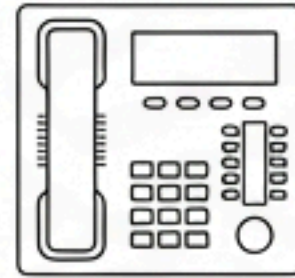
PLANT COMMUNICATION SYSTEMS

CENTRAL EXCHANGE



Digital Microprocessor EPABX
Capacity: **50 Call Stations**

INTERCOM STATIONS



Desk Type: **3 NOS**

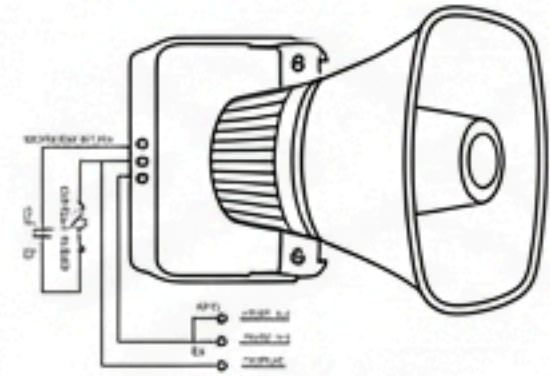


Weather Proof (25W Amp): **10 NOS**

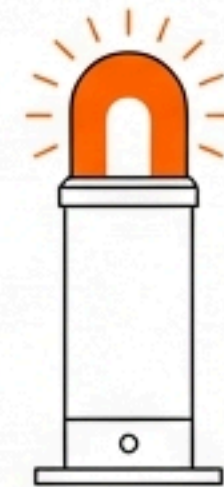


Flame Proof (Gas Group IIA/IIB): **10 NOS**

FIELD AUDIO

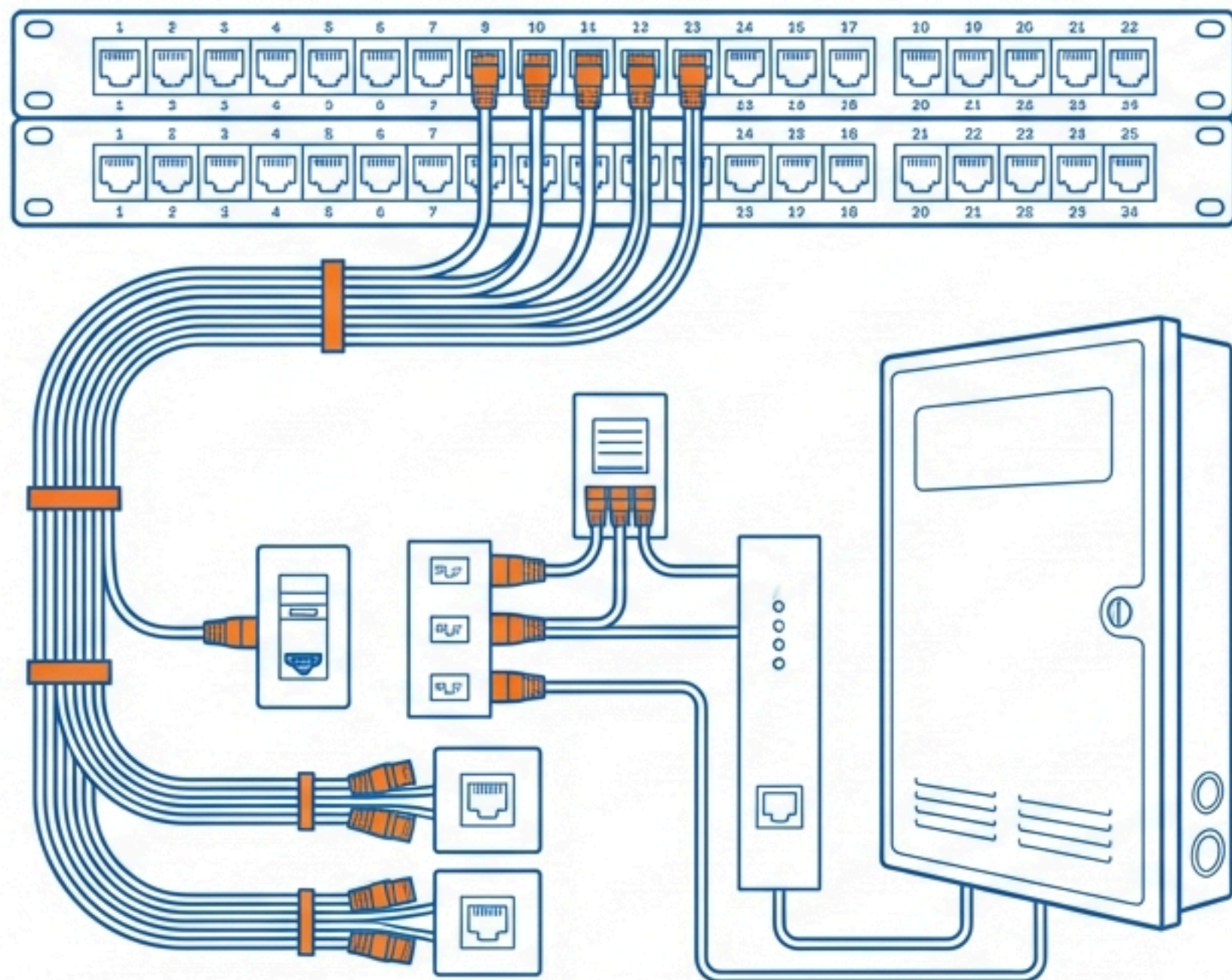


25W Paging Loudspeakers
(**10 NOS Total**)



Beacon Lamps
(**4 NOS Total**)

DIGITAL INFRASTRUCTURE (LAN)



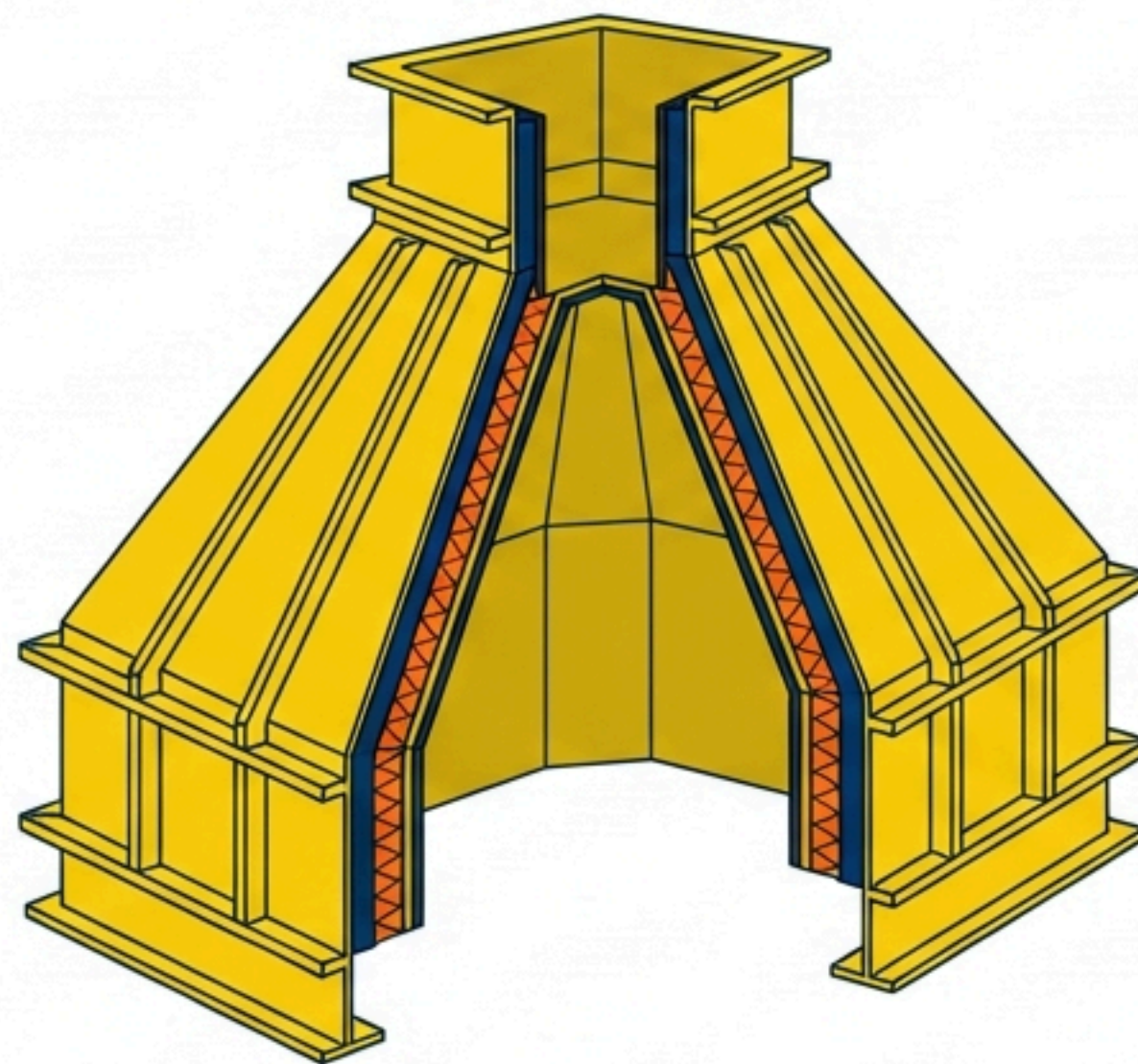
- CAT-6 UTP Cabling: **30 Meters**
- Circuit Wiring: Ether-switch rack to Information Outlets
- Flush Mounted CAT-6 Jacks with Face Plates
- Indoor Telephone Distribution Box **(10/20/50 Pair)**

ACOUSTIC ISOLATION INFRASTRUCTURE

WEATHER PROOF ACOUSTIC HOODS

For Noisy Areas
(Industrial Type)

Quantity: 2 NOS



FLAME PROOF ACOUSTIC HOODS

For Gas Group IIA, IIB
Temp Class T3

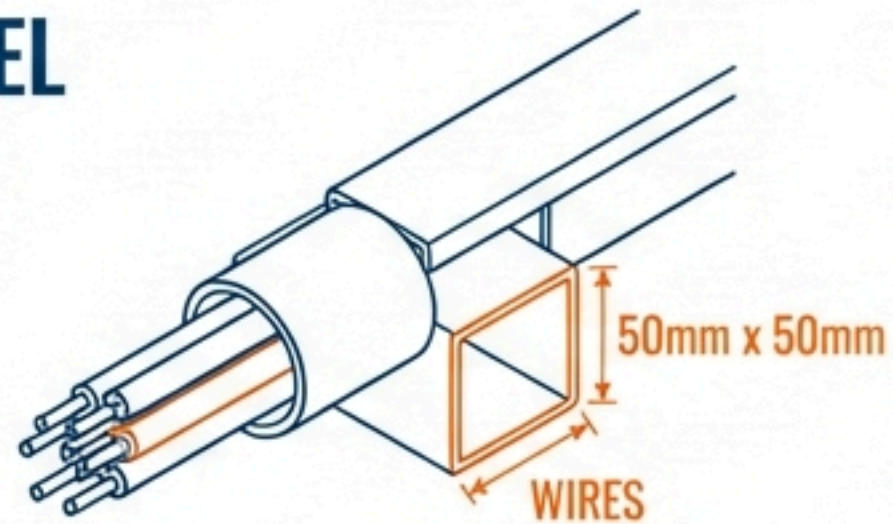
Quantity: 2 NOS



GENERAL WIRING & SMALL POWER

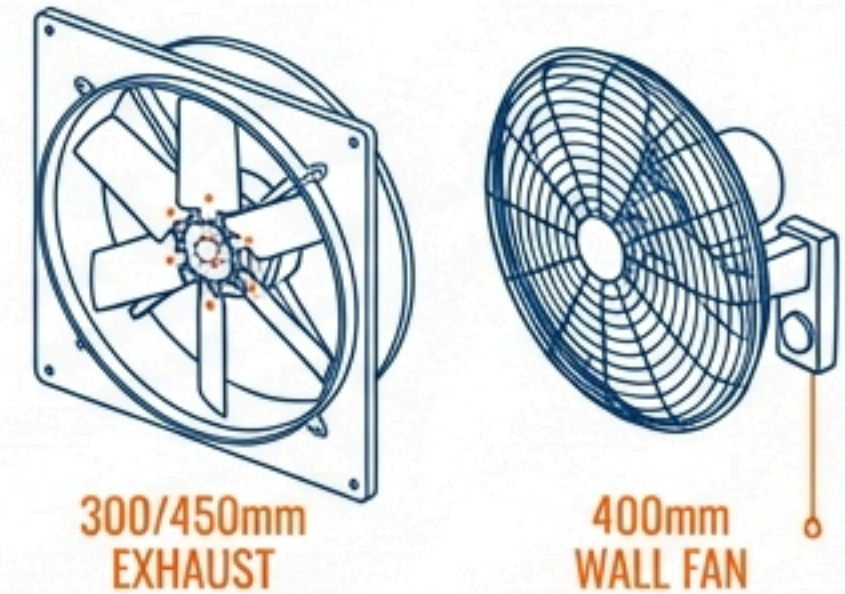
CONDUIT & CHANNEL

PVC insulated copper wire in MS conduit / METSEC channel (50x50mm)



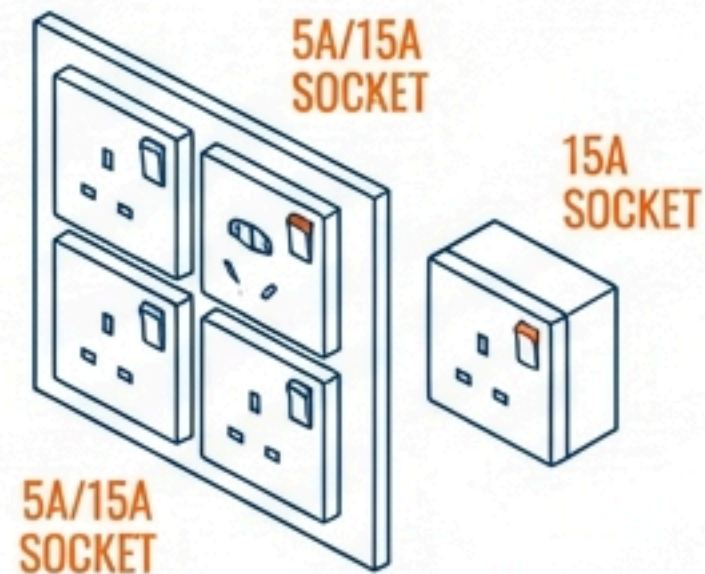
VENTILATION

Heavy Duty Exhaust Fans (300/450mm) & Wall Fans (400mm)



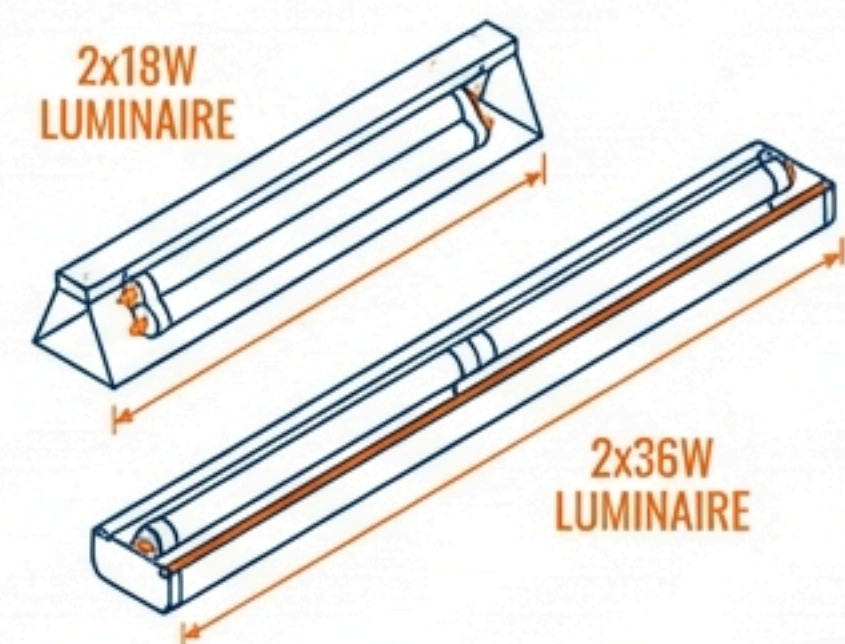
POWER POINTS

5A/15A Switch Sockets (Various Configs)



INDOOR LIGHTING

Mirror Optic Luminaires (2x18W, 2x36W)





EXECUTION MANDATE & COMPLIANCE

STANDARDS

- Strict adherence to EIL Specifications.

SUPPLY CHAIN

Owner Supply: Major Equipment/Cable.

Contractor Supply: Steel/Cement/Consumables.

STATUS

Inter Regular, Light
**Immediate Mobilization
required upon
instruction.**